

Quick start guide

3D Printer

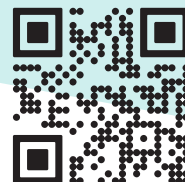
Fracktal Works Julia Pro Dual



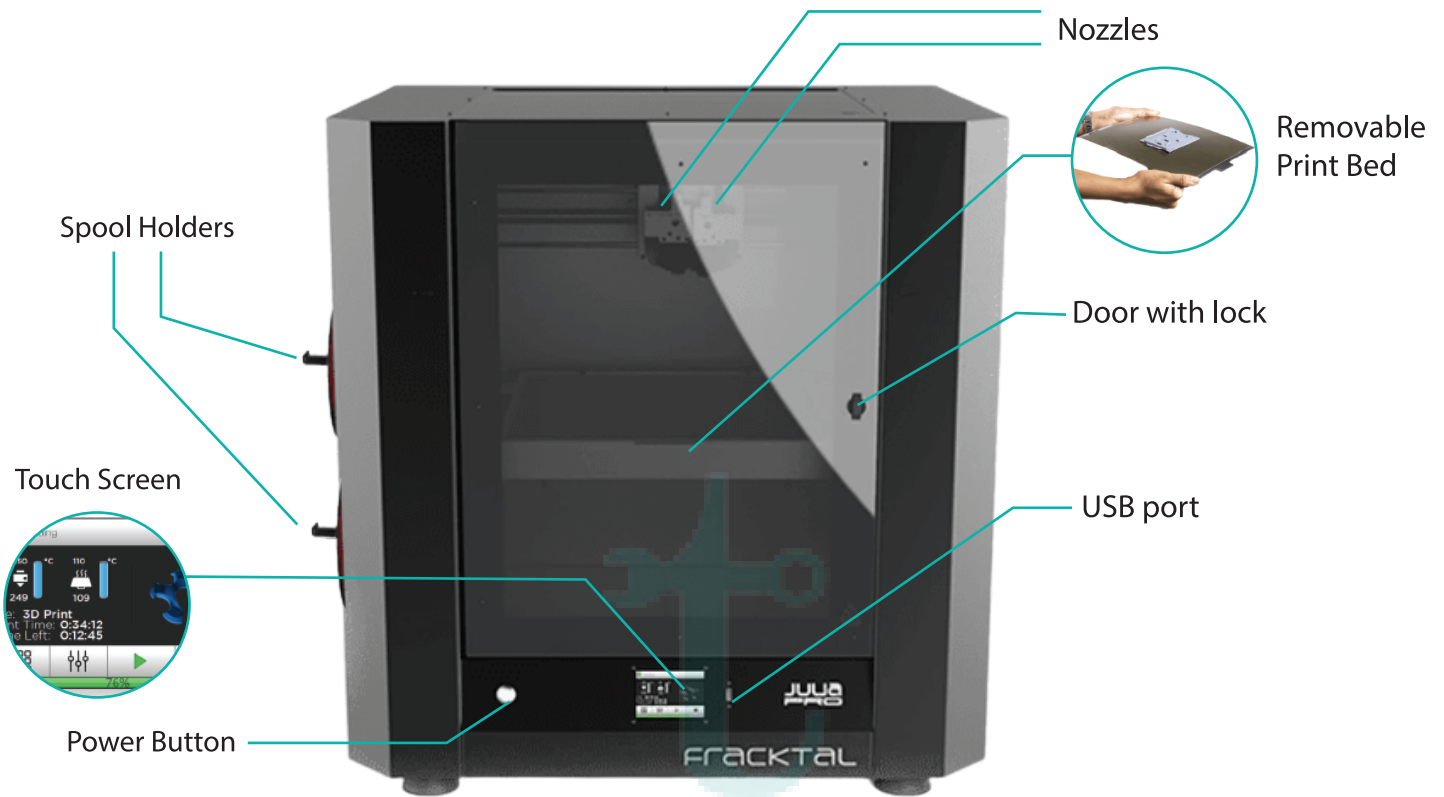
FRACKTAL
WORKS

Scan to Download the Software


Technoventor
Innovations Private Limited

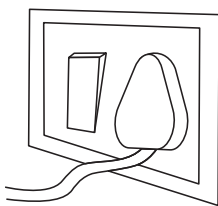


Machine Appearance & Accessories



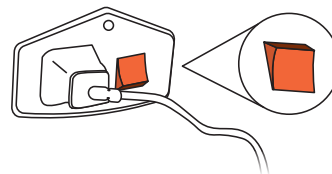
Machine Startup & Testing

1



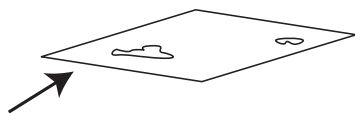
Switch on the Main switch.

2



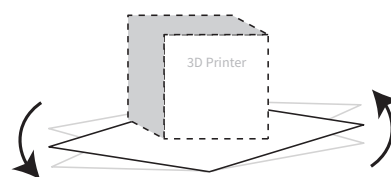
Switch on the machine switch placed at the backside (right side) of the machine.

3



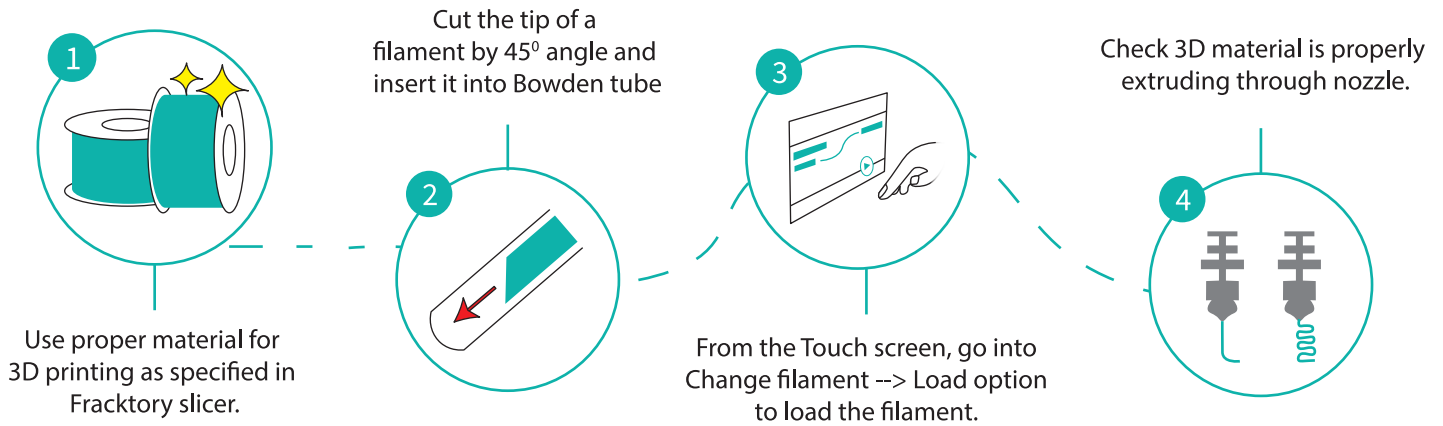
Check the bed surface clean or not?

4

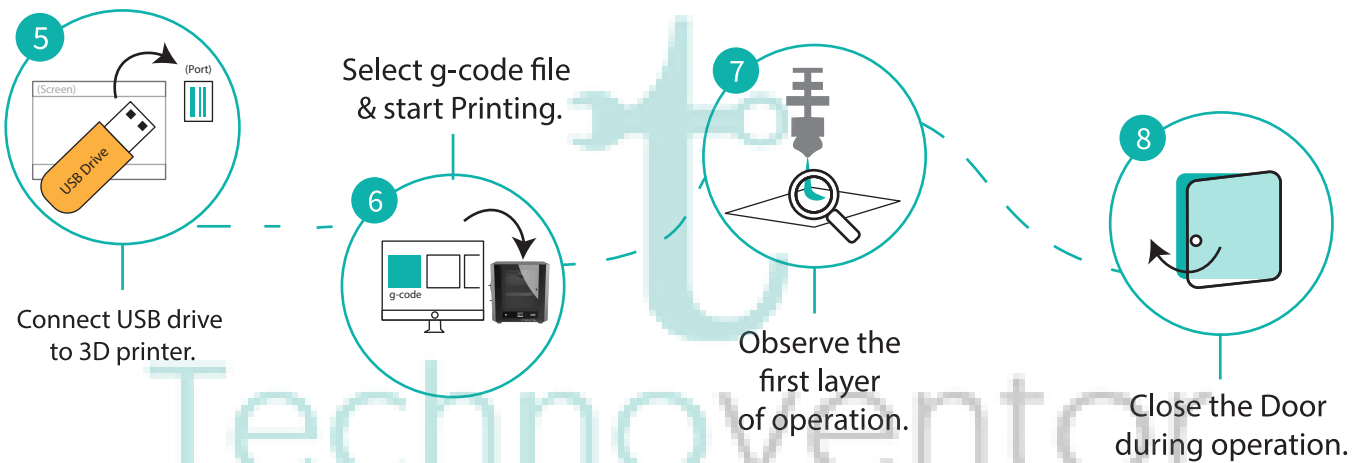


Check the bed levelling.

Material Startup



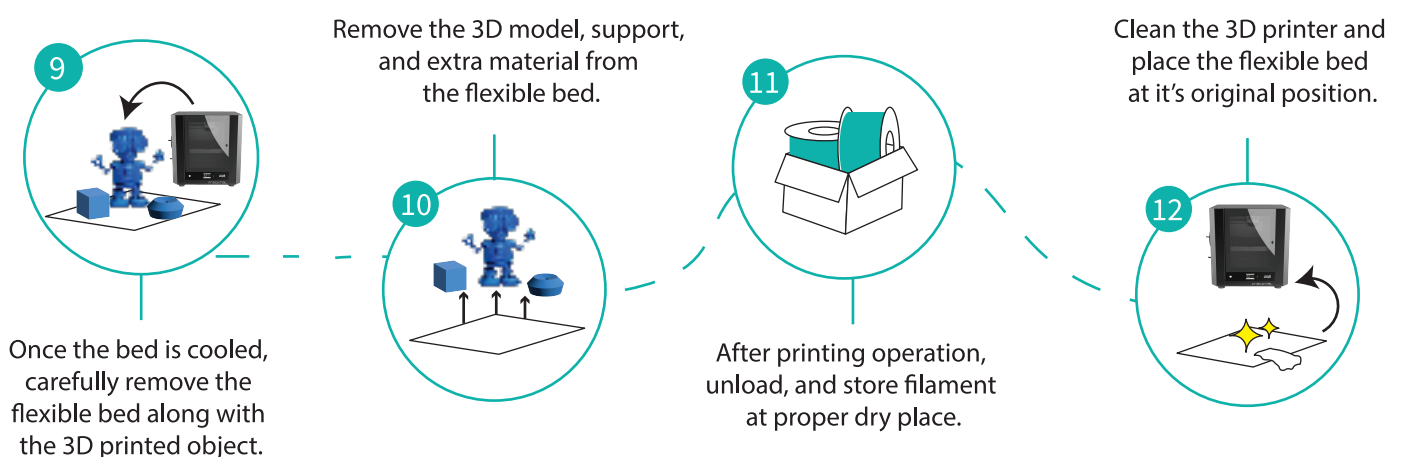
Operation



*Check parameters in slicer for both the extruders when doing Dual Nozzle 3D Printing

*Disable "Extruder 1" in slicer to use julia pro as a single nozzle 3D printer.

Post Processing & Maintenance



DO's

- ✓ Always keep machine clean, dry and moisture free.
- ✓ Always keep proper ventilation surrounding to machine.
- ✓ Use good quality filament materials.
- ✓ Clean nozzle and flex bed periodically.
- ✓ Lubricate X-Y-Z axis using WD-40.
- ✓ Always switch off the machine while performing maintenance.

DONT's

- ✗ Do not put the printer near any heat source or inflammable area.
- ✗ Do not put the printer on any vibrational or unstable environment.
- ✗ Do not touch nozzle or bed during printing operation.
- ✗ Do not connect to supply other than AC 230V / 50 Hz.
- ✗ Do not use any other power cable except one supplied.
- ✗ Do not interfere with machine while printing operation is going on
- ✗ Do not use two incompatible materials.

Machine Specification

Machine Size	650 mm x 700 mm x 1200 mm	Build Plate	PEI Flexbuild Surface For all other materials Nylon Surface For Nylon, Nylon CF
Build Volume	370 mm x 400 mm x 400 mm	Build Plate Temperature	Upto 150 °C
Print Technology	FFF	Compatible Materials	ABS, PLA, Tough PLA, PLA+, PETg, PVA, PVA+, BVOH, Polycarbonate, Nylon 12, Carbon Fiber Nylon, Carbon Fiber PLA.
Filament Diameter	1.75 mm	Supplied Slicing Software	Fracktory Desktop Slicer
Nozzle Diameter	0.4 mm to 1.2 mm	Supported File Types	STL, OBJ, X3D, 3MF, PNG, JPG
Layer Resolution	0.25 mm nozzle: 60 – 180 micron 0.4 mm nozzle: 100 – 300 micron 0.6 mm nozzle: 150 – 450 micron		
XYZ Resolution	8 Micron, 8 Micron, 2 Micron		
Calibration	Active Automatic Levelling & Calibration		
Nozzle Temperatures	Upto 390 °C		
File Transfer	Advanced: USB Pen Drive, WIFI, LAN		

For any queries contact:

✉ service@technoventor.com

☎ 8828294964 / 7304419928